

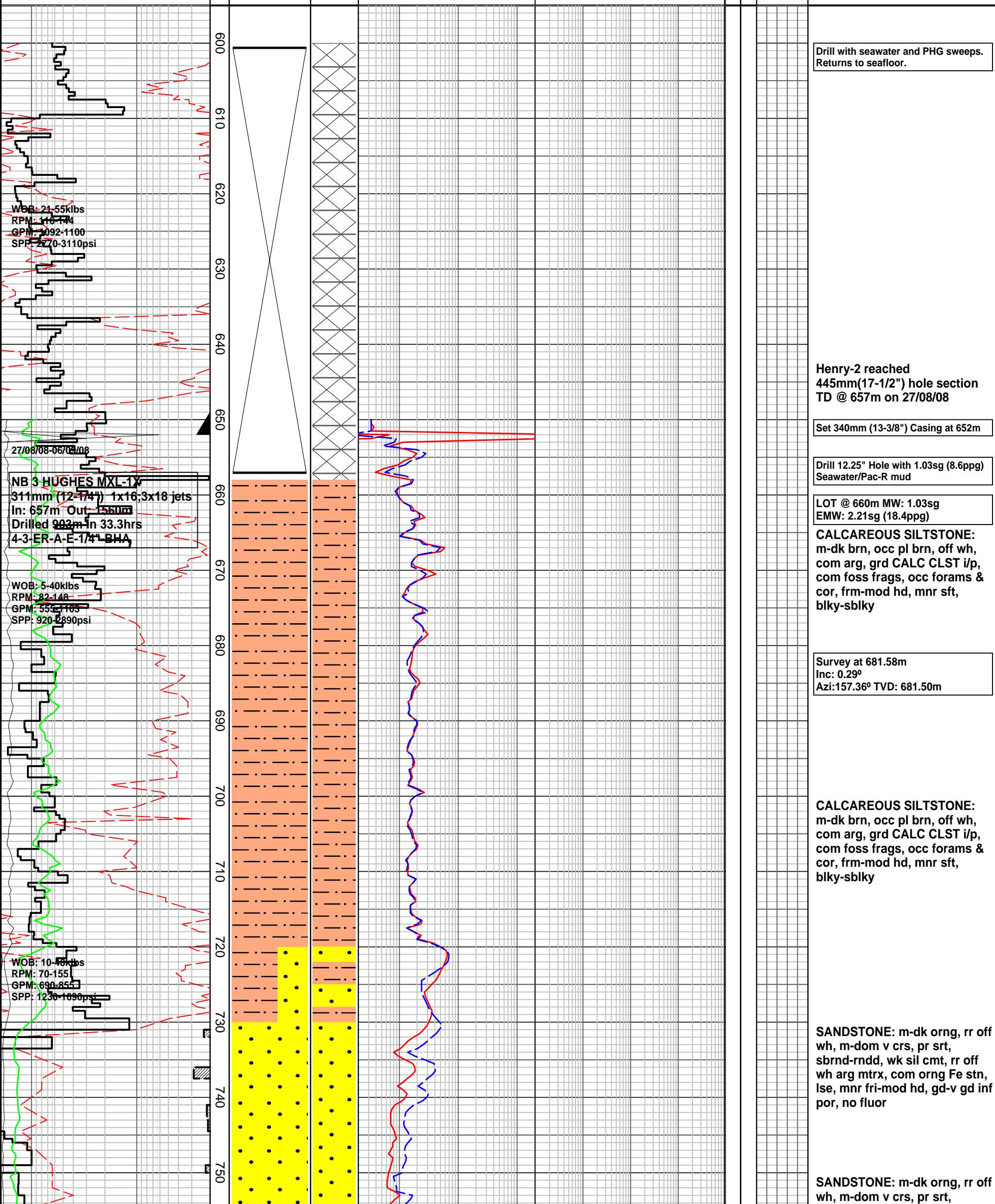


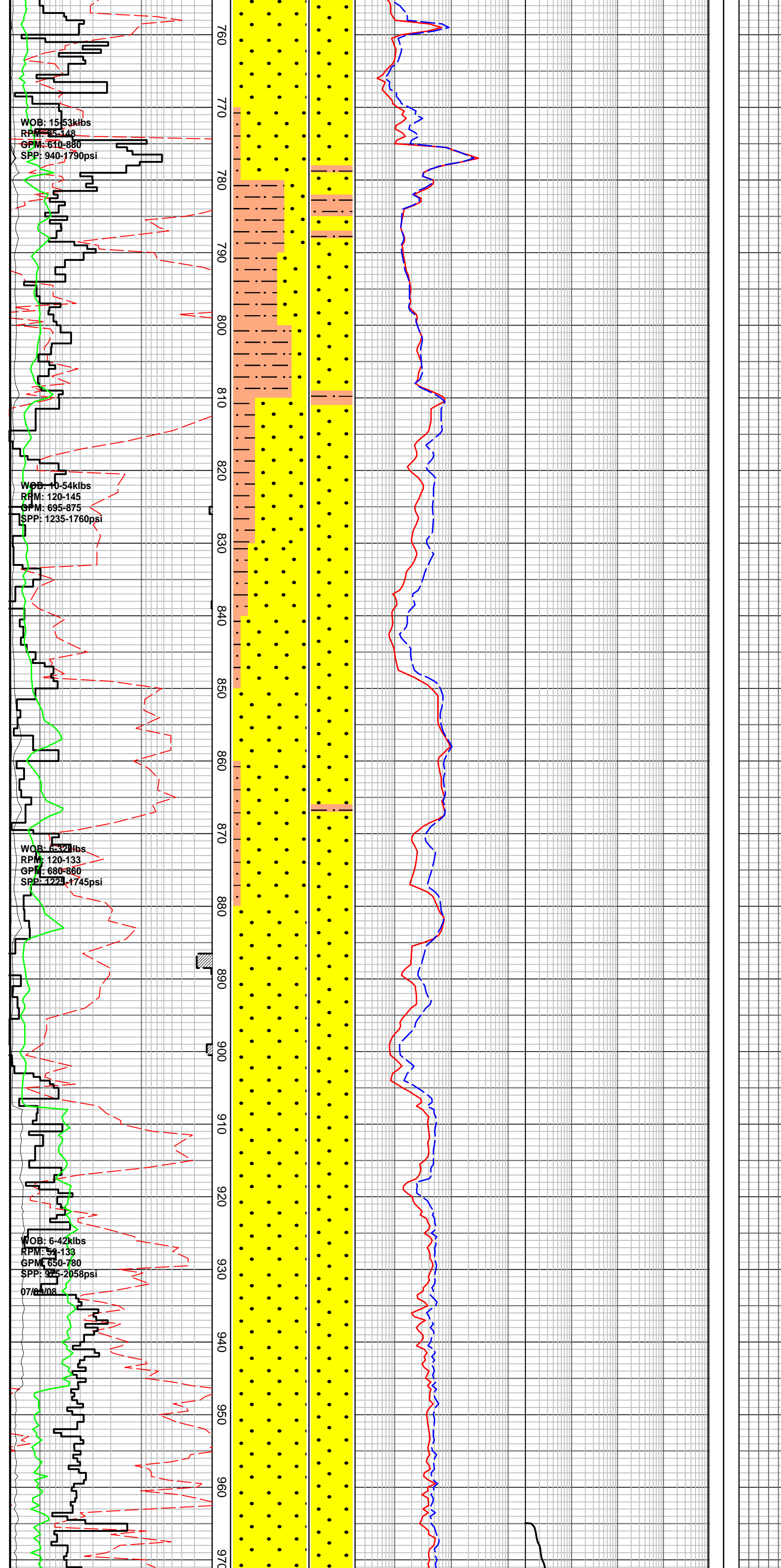
Company : Santos
 Well : Henry-2
 Interval : 595.00 - 2027.64 meters
 Created : 12/Sep/2008 3:36:49 PM

INTEQ

HENRY-2 FORMATION EVALUATION LOG

WOB 10 20 30 40 kibf ROP	MD meters 500	LITHOLOGY %	INTERPRETED LITHOLOGY	RESISTIVITY		CHROMATOGRAPH				DIRECT FLUORESCENCE CUT FLUORESCENCE PFG	CALC	REMARKS	
				Resistivity (shallow)		Total Gas							
				2	20	200	1	10	100				1000
				ohm.m		unit							
Resistivity (medium)		Methane											
200		Ethane											
ohm.m		Propane											
MWD.P40H_RT		i-Butane											
2		n-Butane											
20		i-Pentane											
200		n-Pentane											
OHMM		100 1000 10000 100000 ppm											





SANDSTONE: off wh-pl gy, wh arg mtrx, com org Fe stn, lse, mnr fri-mod hd, gd-v gd inf por, no fluor

Survey at 768.28m
Inc: 0.83°
Azi: 157.79° TVD: 768.20m

SILTSTONE: pl-m grn, pl gy, gy grn, off wh, arg, mnr glauc gr, rr pyr nods, frm-mod hd, disp i/p, sbblky, mnr amor

MW: 1.19 FV: 75 PV: 21 YP: 31
GELS: 9/15/21 SOL: 5.22
pH: 8.5 Ck: 8.5 CL: 66000

SANDSTONE: off wh-pl gy, clr-trnsl, crs-v crs, m i/p, mod srt, sbang-rnnd, wk sil cmt, occ off wh arg mtrx, occ pyr nods, lse gr, mnr fri, fr-gd inf por, no fluor

SANDSTONE: off wh-pl gy, clr-trnsl, crs-v crs, m i/p, mod srt, sbang-rnnd, wk sil cmt, occ off wh arg mtrx, occ pyr nods, lse grs, mnr fri, fr-gd inf por, no fluor

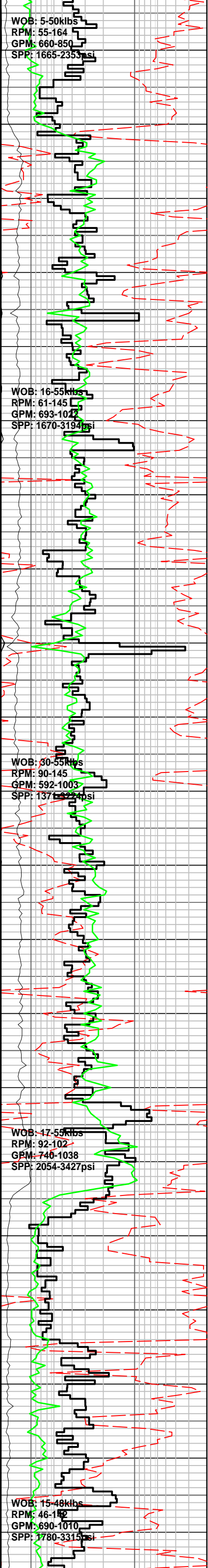
SANDSTONE: off wh-pl gy, clr-trnsl, crs-v crs, m i/p, mod srt, sbang-rnnd, wk sil cmt, occ off wh arg mtrx, occ pyr nods, lse grs, mnr fri, fr-gd inf por, no fluor

Survey at 883.67m@
Inc: 3.87°
Azi: 140.62° TVD: 883.50m

SANDSTONE: lt brnsh gy i/p, clr-trnsl, f- crs, pr srt, sbang-sbrnnd, nil cmt, rr lt brnsh gy arg mtrx, rr nod pyr, tr mic, tr liths, pred lse qtz grs, gd inf por, no fluor

Displace Hole with 1.19sg (9.9ppg)
KCL/Glycol mud

SANDSTONE: lt brnsh gy i/p, clr-trnsl, f- crs, pr srt, sbang-sbrnnd, nil cmt, rr lt brnsh gy arg mtrx, rr nod pyr, tr mic, tr liths, pred lse qtz gr, gd inf por, no fluor



SANDSTONE: lt brnsh gy i/p, clr-trnsl, f- crs, pr srt, sbang-sbrnidd, nil cmt, rr lt brnsh gy arg mtrx, rr nod pyr, tr mic, tr liths, pred lse qtz gr, gd inf por, no fluor

Survey at 998.24m
Inc: 13.64°
Azi: 148.11° TVD: 996.90m

SILTSTONE: m brn, m brnsh gy, arg, loc vf aren, tr f carb spks, tr vf glauc, sft frm, disp i/p, sblky

SILTSTONE: m brn, m brnsh gy, arg, loc vf aren, mnr carb spks, tr vf glauc, sft frm, sblky

SANDSTONE: off wh, lt brnsh gy, clr-trnsl, f-m gr, tr crs, pr srt, sbang-sbrnidd, mnr wk calc cmt, mnr lt brnsh gy arg mtrx, tr liths, tr carb spks, p-fr inf por, no fluor

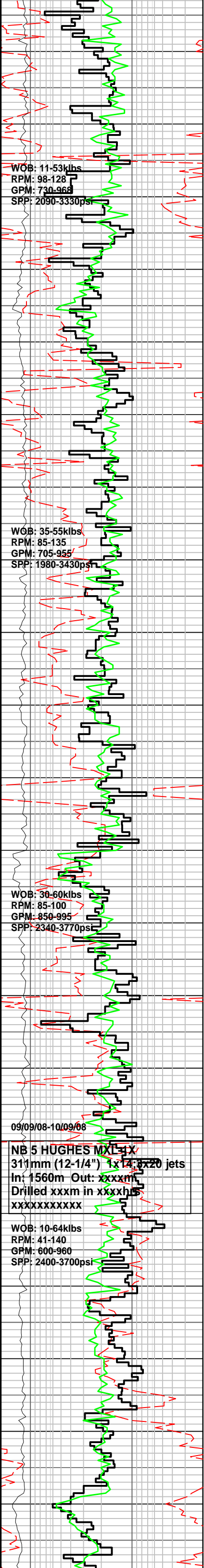
SANDSTONE: off wh, lt brnsh gy, clr-trnsl, f-m gr, tr crs, pr srt, sbang-sbrnidd, mnr wk calc cmt, mnr lt brnsh gy arg mtrx, tr liths, tr carb spks, p-fr inf por, no fluor

Survey at 1112.80m
Inc: 24.41°
Azi: 135.23° TVD: 1104.90m

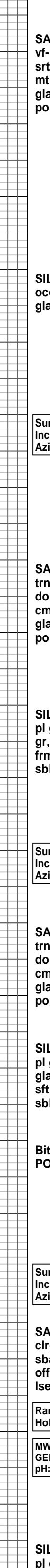
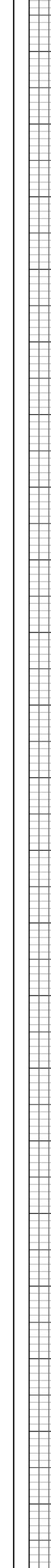
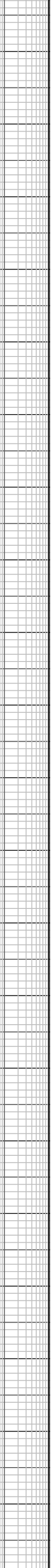
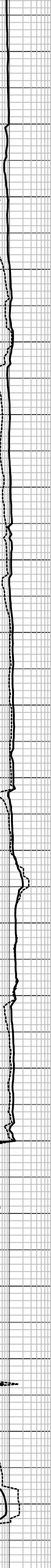
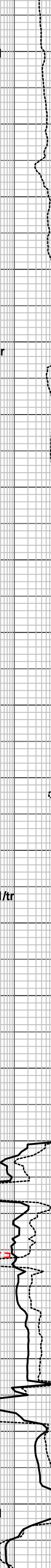
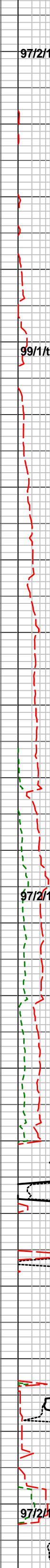
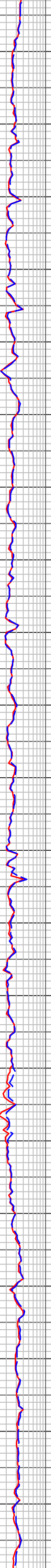
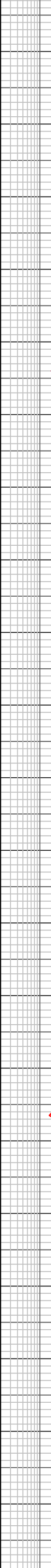
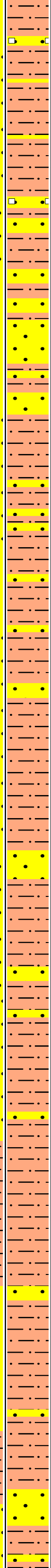
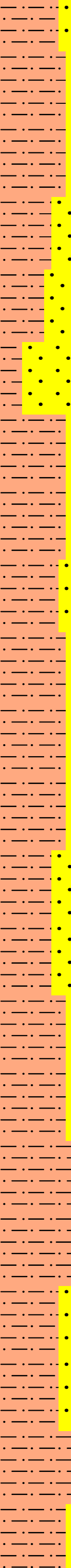
SANDSTONE: lt gy, lt brnsh gy, grnsh gy, clr-trnsl, vf-f gr, rr m-crs, sbang-sbrnidd, pr srt, rr sil cmt, com nod pyr, tr liths, fri-mod hd vf agg, lse-m crs gr, pr inf por, no fluor

SANDSTONE: lt gy, lt brnsh gy, grnsh gy, clr-trnsl, vf-f gr, rr m-crs, sbang-sbrnidd, pr srt, rr sil cmt, com nod pyr, tr liths, fri-mod hd vf agg, lse-m crs gr, pr inf por, no fluor

SANDSTONE: lt gy, lt brnsh gy, grnsh gy, clr-trnsl, vf-f gr, rr m-crs, sbang-sbrnidd, pr srt, rr sil cmt, com nod pyr, tr liths



1410
1420
1430
1440
1450
1460
1470
1480
1490
1500
1510
1520
1530
1540
1550
1560
1570
1580
1590
1600
1610
1



97/2/1

99/1/tr

97/2/1/tr

97/2/1

SANDSTONE: lt gy, clr-trnsl, vf-m gr, sbang-sbrndd, mod srt, rr wk sil cmt, mnr lt gy arg mtrx, com nod pyr, tr f gr glauc, fri agg, pred lse, fr inf por, no fluor

SILTSTONE: m brnsh gy, lt gy, occ dk gy, arg, rr nod pyr, com glauc, frm, disp, sblky-blky

Survey at 1460.30m
Inc: 38.67°
Azi: 109.79° TVD: 1393.20m

SANDSTONE: off wh-pl gy, clr trnsl, f-m, mnr crs, mod srt, dom sbang, occ sbrndd, wk sil cmt, mnr off wh arg mtrx, rr glauc grs, lse, rr fri agg, fr inf por, p-fr vis por, no fluor

SILTSTONE: pl-occ m brn, mnr pl gn, com arg, occ-com glauc gr, mnr carb spks, dis-v sft, frm i/p, gen amor, occ sblky-blky

Survey at 1519.61m
Inc: 38.21°
Azi: 109.48° TVD: 1439.90m

SANDSTONE: off wh-pl gy, clr trnsl, f-m, mnr crs, mod srt, dom sbang, occ sbrndd, wk sil cmt, mnr off wh arg mtrx, rr glauc grs, lse, rr fri agg, fr inf por, p-fr vis por, no fluor

SILTSTONE: pl-occ m brn, mnr pl grn, com arg, occ-com glauc gr, mnr carb spks, dis-v sft, frm i/p, gen amor, occ sblky-blky

Bit 4 unable to pass 88m, POOH layout BHA.

Survey at 1577.82m
Inc: 39.48°
Azi: 111.06° TVD: 1485.5m

SANDSTONE: off wh-pl gy, clr-trnsl, f-v crs, pr srt, sbang-sbrndd, wk sil cmt, mnr off wh arg mtrx, mnr pyr nod, lse, fr inf por, no fluor

Ran Carbide @ 1596.00m
Hole In Gauge

MW: 1.32 FV: 89 PV: 34 YP: 58
GELS: 14/29/39 SOL: 11.62
pH: 8.5 Ck: 1 CL: 58000

SILTSTONE: pl-occ m brn, mnr pl arn, com arg, occ glauc ar 8

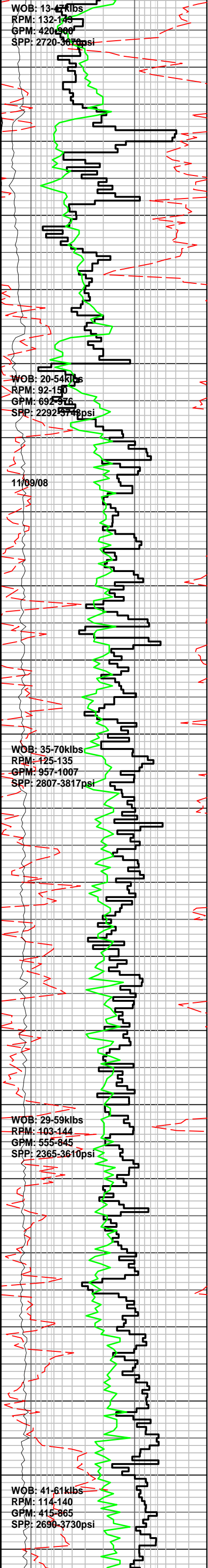
WOB: 13-47klbs
RPM: 132-145
GPM: 420-900
SPP: 2720-3670psi

WOB: 20-54klbs
RPM: 92-150
GPM: 692-876
SPP: 2292-5740psi

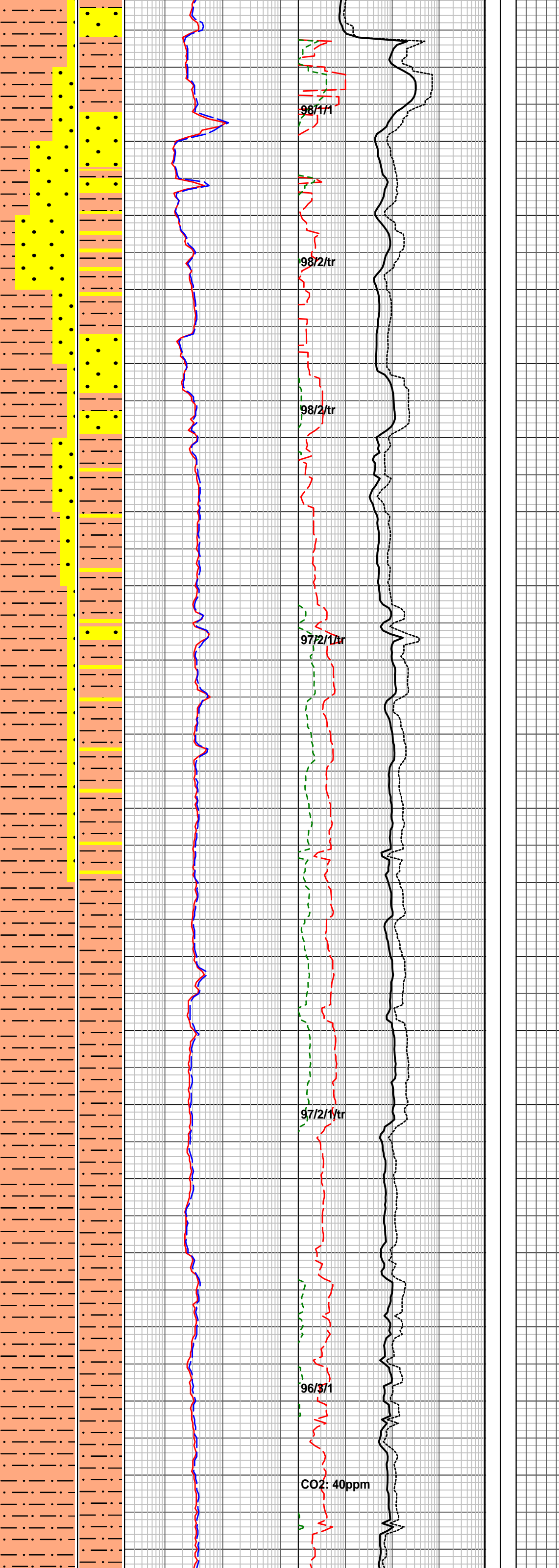
WOB: 35-70klbs
RPM: 125-135
GPM: 957-1007
SPP: 2807-3817psi

WOB: 29-59klbs
RPM: 403-144
GPM: 555-845
SPP: 2365-3610psi

WOB: 41-61klbs
RPM: 114-140
GPM: 415-865
SPP: 2690-3730psi



620
1630
1640
1650
1660
1670
1680
1690
1700
1710
1720
1730
1740
1750
1760
1770
1780
1790
1800
1810
1820
1830



carb spks, dis-v sft, frm i/p, amor, sbiky

Survey at 1634.98m
Inc: 43.80°
Azi: 113.39° TVD: 1528.30m

SANDSTONE: off wh, clr-trnsl, f-occ m, vf i/p, mod srted, sbang-sbrndd, mod calc cmt, com off wh arg mtrx, mnr liths, lse cln grs, fri, pr inf & vis por, no fluor

SANSTONE: off wh, clr-trnsl, f-m, rr crs gr, wl srt, sbang-occ sbrndd, mod calc cmt, com off wh arg mtrx, occ pyr nod, mnr liths, lse cln gr, fri, pr inf & vis por, mnr dull orgn fluor

SILTSTONE: pl-occ m brn, mnr pl grn, com arg, occ glauc gr & carb spks, dis-v sft, frm i/p, amor, sbiky

SANSTONE: off wh, clr-trnsl, f-m, rr crs gr, sbang-occ sbrndd, mod wl srt, tr wk calc cmt, tr f gr glauc, pred lse f gr qtz, pr inf por, no fluor

Survey at 1720.65m
Inc: 49.49°
Azi: 115.31° TVD: 1587.30m

SANDSTONE: v lt gy-lt gy, wh, clr-trnsl, vf-f gr, sbang-sbrndd, wl srt, mod calc cmt, rr f gr glauc, rr nod pyr, mod hd agg, v pr vis por, no fluor

Survey at 1751.51m
Inc: 52.16°
Azi: 116.21° TVD: 1606.50m

SILTSTONE: m gy, m brnsh gy, arg, vf aren i/p, tr f gr glauc, frm, disp i/p, blk

Survey at 1779.21m
Inc: 54.97°
Azi: 116.68° TVD: 1623.20m

SILTSTONE: m gy-m dk gy, m brnsh gy, arg with clay content easily washed from samples, loc vf aren, rr liths, tr glauc, frm, disp i/p, blk

SILTSTONE: pl brn, pl-m brn gy, gen arg, occ carb spks, mnr glauc grs, mnr micro mic, disp-v sft, frm i/p, amor sbiky

Survey at 1836.56m
Inc: 59.33°
Azi: 117.70° TVD: 1654.10m

OGY

2 | 20 | 200
OHMM

i-Butane

n-Butane

i-Pentane

n-Pentane

100 | 1000 | 10000 | 100000
ppm

PFG